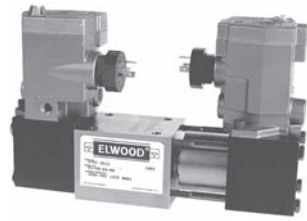


Directional Control Valves Packed Spool 4-Way

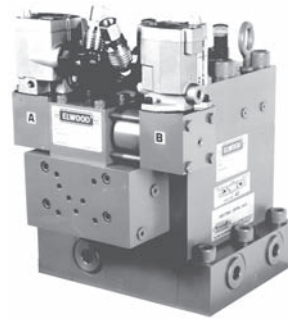
- Directional Valve for a range of applications
- Up to 46 GPM (32 GPM nominal)
- 3000 PSI (207 bar) and 6000 PSI (414 bar)



- Air Solenoid Operated
- 3-position spring centered
- 2-position spring offset
- 2-position momentary contact

Brochure 82

Directional Control Valves DIN Poppet Series; 2-, 3- and 4-Way



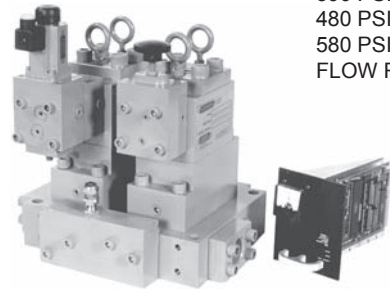
- Capacities to 1600 GPM (6057 LPM))
- 3000 PSI (207 bar), 4500 PSI (310 bar) and 6000 PSI (414 bar) models are available
- Built-in flow control
- Manifold mounted, NPT, socket weld or flanged

Brochure 395

Proportional Pressure Control System

Controlled Pressure Ranges:

390 PSI (27 bar) to 1500 PSI (103 bar)
480 PSI (33 bar) to 3000 PSI (207 bar)
580 PSI (40 bar) to 6000 PSI (414 bar)
FLOW RATE: To 1000 GPM (3785 LPM).)



Brochure 104

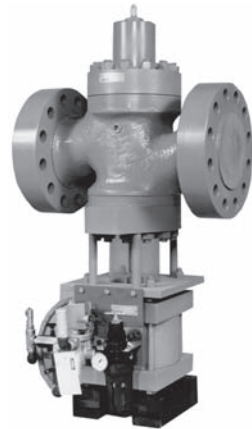
Modular Iso-Lock Valve

- Isolates manifold mounted directional control valves
- Reduces maintenance time - replace Directional Valves without depressurizing and draining hydraulic system.
- Single lever operation to close all four ports (P, T, A, B). Cylinders can remain under the external load without having to be blocked.
- Lockable per OSHA safety standard
- NFPA "DO"/CETOP and special mounting patterns available



Brochure 250

Accumulator Shut-off / Descaling



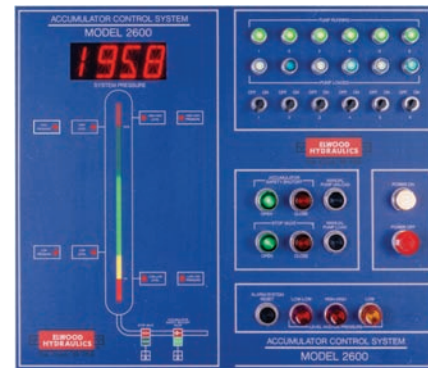
Capacities:

3000 PSI (207 bar)
6000 PSI (414 bar)
6000 GPM (22710 LPM))

Connection Sizes: 1 1/4" to 10"

A.S.O. Valves - Brochure 102
Descaling Valves - Brochure 396

Accumulator Control Panel

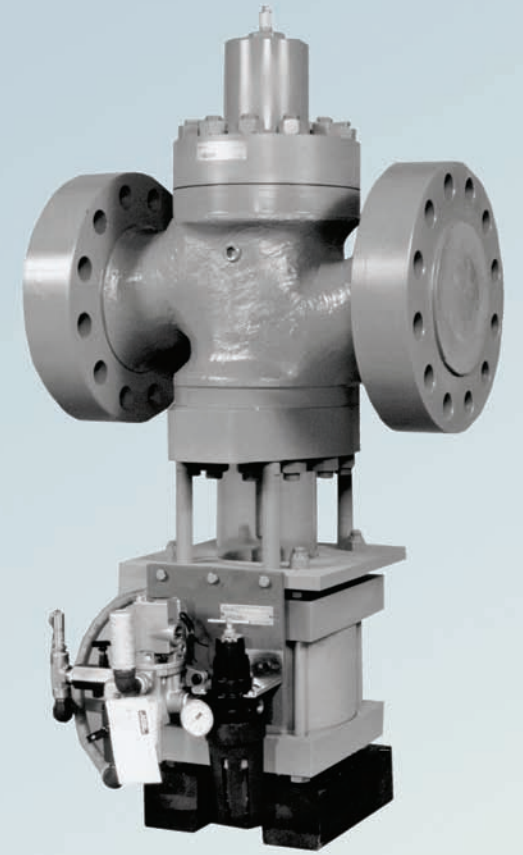


- Descaling
- Mill Systems
- Presses
- Controls
 - Level
 - Pressure
 - Pump Sequencing
 - Ballast Charging
- Designed to your specifications

Brochure 105 & 380

www.elwood.com

最低液面阀



ELWOOD **FLUID POWER**

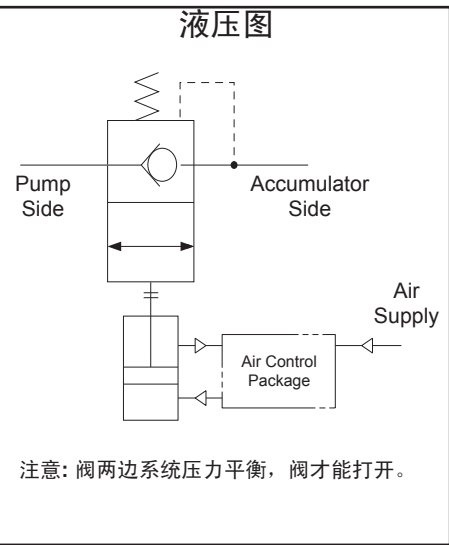
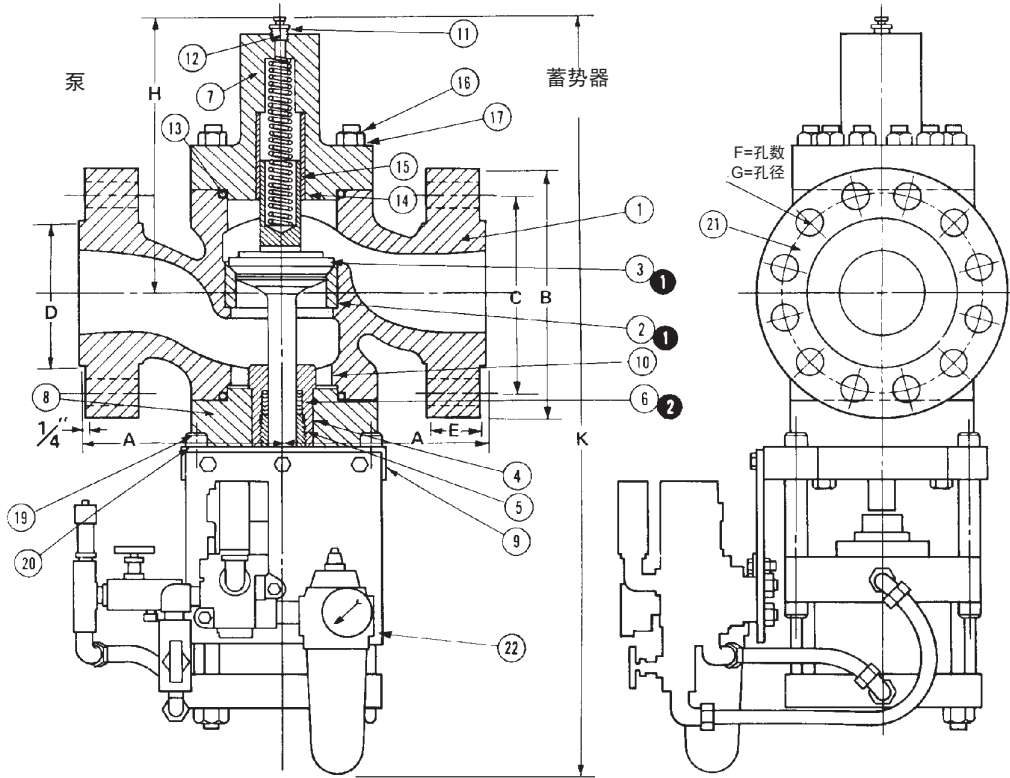
ISO 9001:2000
CERTIFIED COMPANY

ELWOOD **FLUID POWER**

ELWOOD CORPORATION
195 West Ryan Road • Oak Creek, Wisconsin 53154 • USA
Phone: 800-527-7500 • Fax: 414-764-4298
www.elwood.com

9/06 - Brochure 102
Rev. B
Printed in the U.S.A

尺寸数据



尺寸 (ASA 1500 法兰)								
型号	2	2-1/2"	2-1/2"	4"	6"	8"	10"	12"
A	4-1/2	5-1/4	7-1/2	9-3/8	12-1/4	16-3/8	17-1/2	23
B	8-1/2	9-5/8	10-1/2	12-1/4	15-1/2	19	23	26-1/2
C	6-1/2	7-1/2	8	9-1/2	12-1/2	15-1/2	19	23-1/2
D	3-5/8	4-1/8	5	6-3/16	8-1/2	10-5/8	12-3/4	15
E	1-1/2	1-5/8	1-7/8	2-1/8	3-1/4	3-5/8	4-1/4	4-7/8
F	8	8	8	8	12	12	12	16
G	1	1-1/8	1-1/4	1-3/8	1-1/2	1-3/4	2	2-1/8
H	10	11	9-7/8	11-3/4	17-1/4	15 / 21-3/8	17 / 29 *	16 / 28 *
K	28	29	33-7/16	38-1/4	50-1/2	*	57	57
C.V. 系数	49	57	87	120	375	46	990	1100
阀号	4702	4702.5	4703	4704	4706	660	4710	4712
最大流量LPM	1100	1480	2350	3600	9500	17,820	24,600	30,000

ASA 系列 1500 法兰面 3.5K 模型。使用ASA 系列 2500 法兰面6K 模型，咨询工厂。
*偏移蓄势器 / 泵 连接
尺寸为英寸。尺寸可以不提前通知而更改。

部件单			
No. Req'd.	部件号	部件名	材质
1	1	阀体	铸铁
1	2	阀座	硬不锈钢
1	2	阀芯	硬不锈钢
1	4	填料箱	青铜
1	5	密封管	青铜
1	6	V型包	合成物
1	7	顶盖	钢
1	8	底盖	钢
1	9	气缸盘	钢
4	10	隔板	钢
1	11	空气排放	青铜
1	12	降压衬套	不锈钢
2	13	"O" 环	钢
1	14	衬套	合成物
1	15	弹簧	青铜
24	16	螺栓	不锈钢
24	17	六角螺母	钢
4	18	堵塞螺母	钢
4	19	螺钉	钢
4	20	六角螺母	钢
1	21	锥形管塞	钢
1	22	带速度控制的汽缸	钢

订购部件时查看标示牌上的部件号。

订购数据-最低液面阀

最大流量	
尺寸	流量 (LPM)
4702 - 2"	1098
4702 - 2.5"	1476
4703 - 3"	2347
4704 - 4"	3596
4706 - 6"	9463
4708 - 8"	15140
4710 - 10"	24603
4712 - 12"	30280

操作压力	
尺寸	压力 (bar)
2.5	210 bar
3.6	250 bar
4.5	310 bar
6.0	415 bar

空气控制系列的电气必备件		
代码号	电压	空气供应连接型号
3	24 V D.C.	1/2" NPT
6	110 / 120 V - 50/60 Hz A.C.	
8	220 / 240 V - 50/60 Hz A.C.	

其它可使用电压，咨询工厂

额定压力	
代码	压力
3.6K	250 bar
6K	414 bar

法兰类型	
代码	说明
SR15	SR1500 Flange
SR25	SR2500 Flange
其它法兰，咨询工厂	

阀附件	
代码	说明
58	位置指示器
87	安全不锈钢

直线法兰方向为标准。其它类型咨询工厂

u ANSI 16.5法兰面为标准。其它可使用类型咨询工厂详细。
• 标准：使用非标准件额外收费。
最小空气压力需要：
4 bar
最小空气压力需要：
8bar

4702 - 2" - 3.6K - SR15 - 2.5 - 3 - 58

代码号举例：